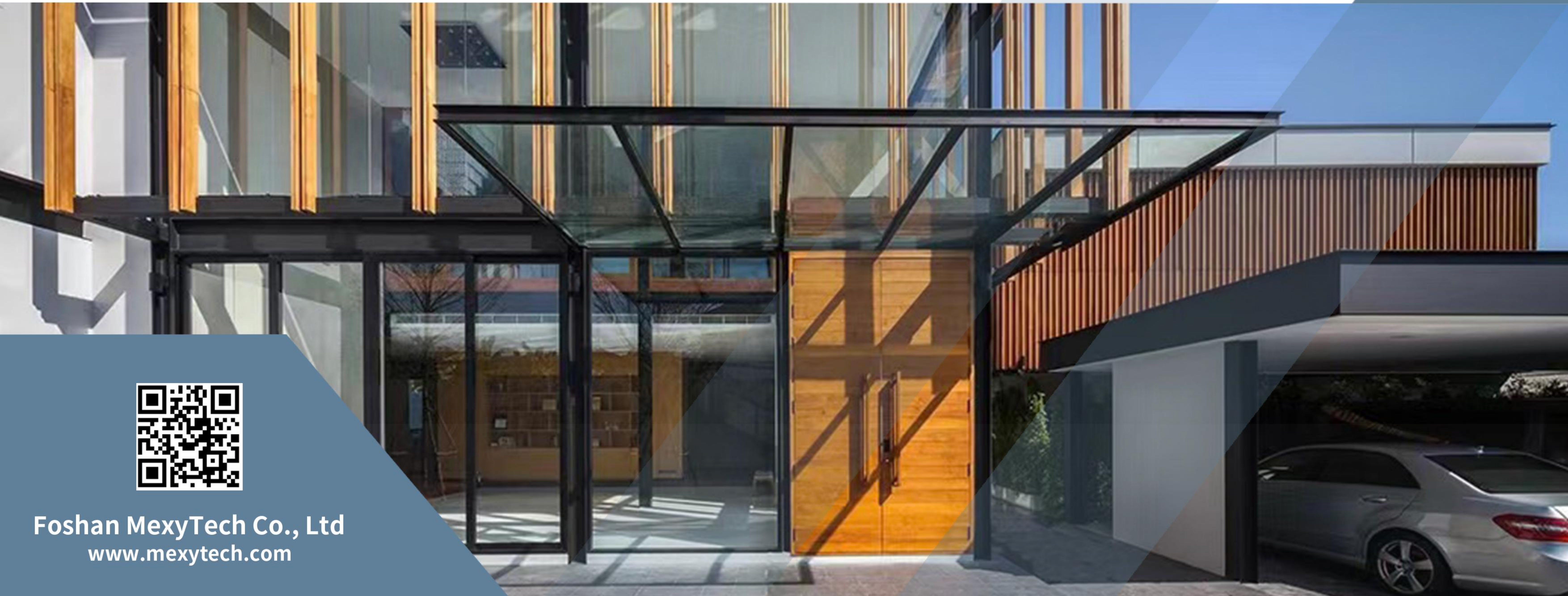


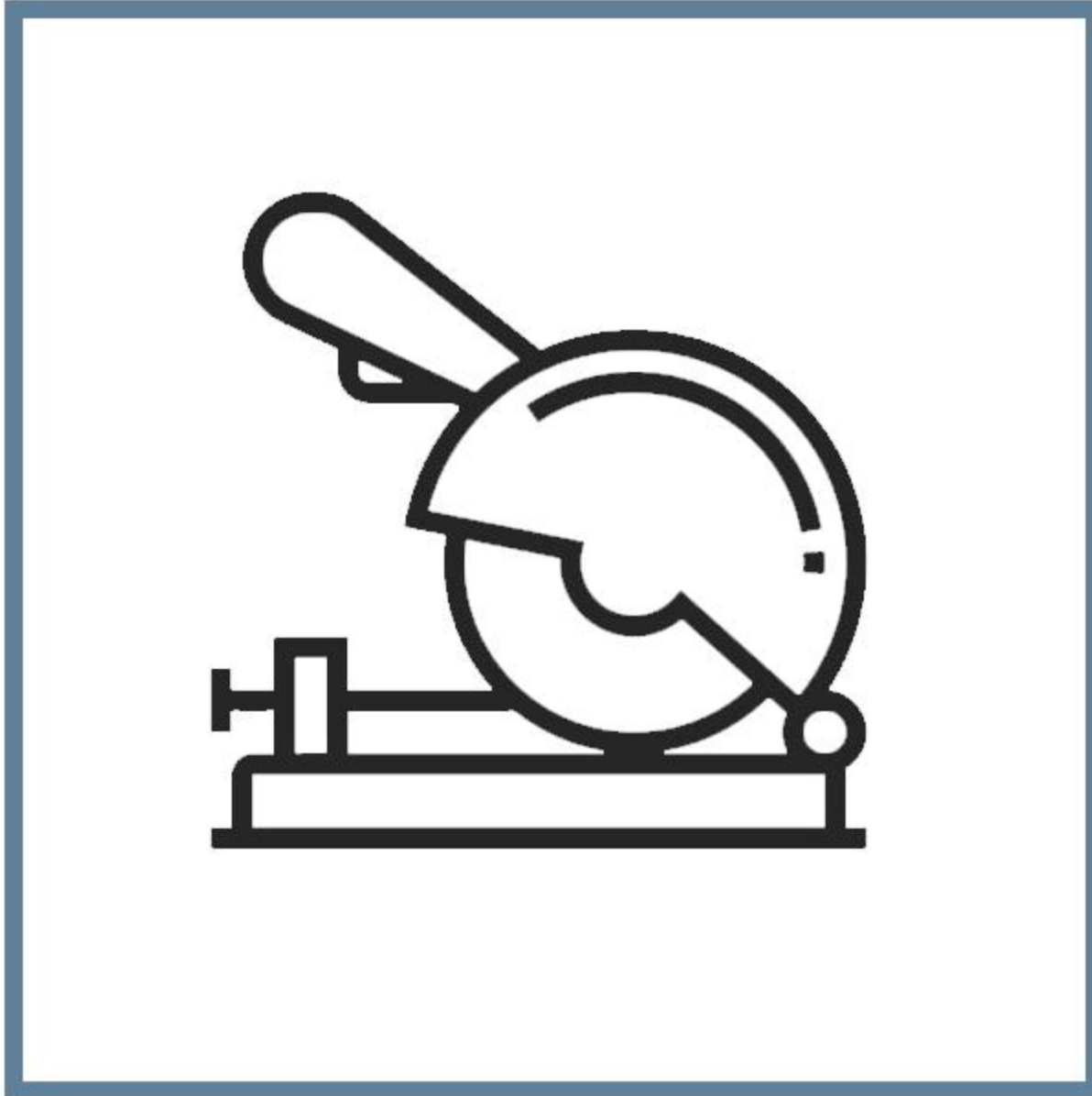


CO-EXTRUSION ALUMINUM CLADDING INSTALLATION GUIDE

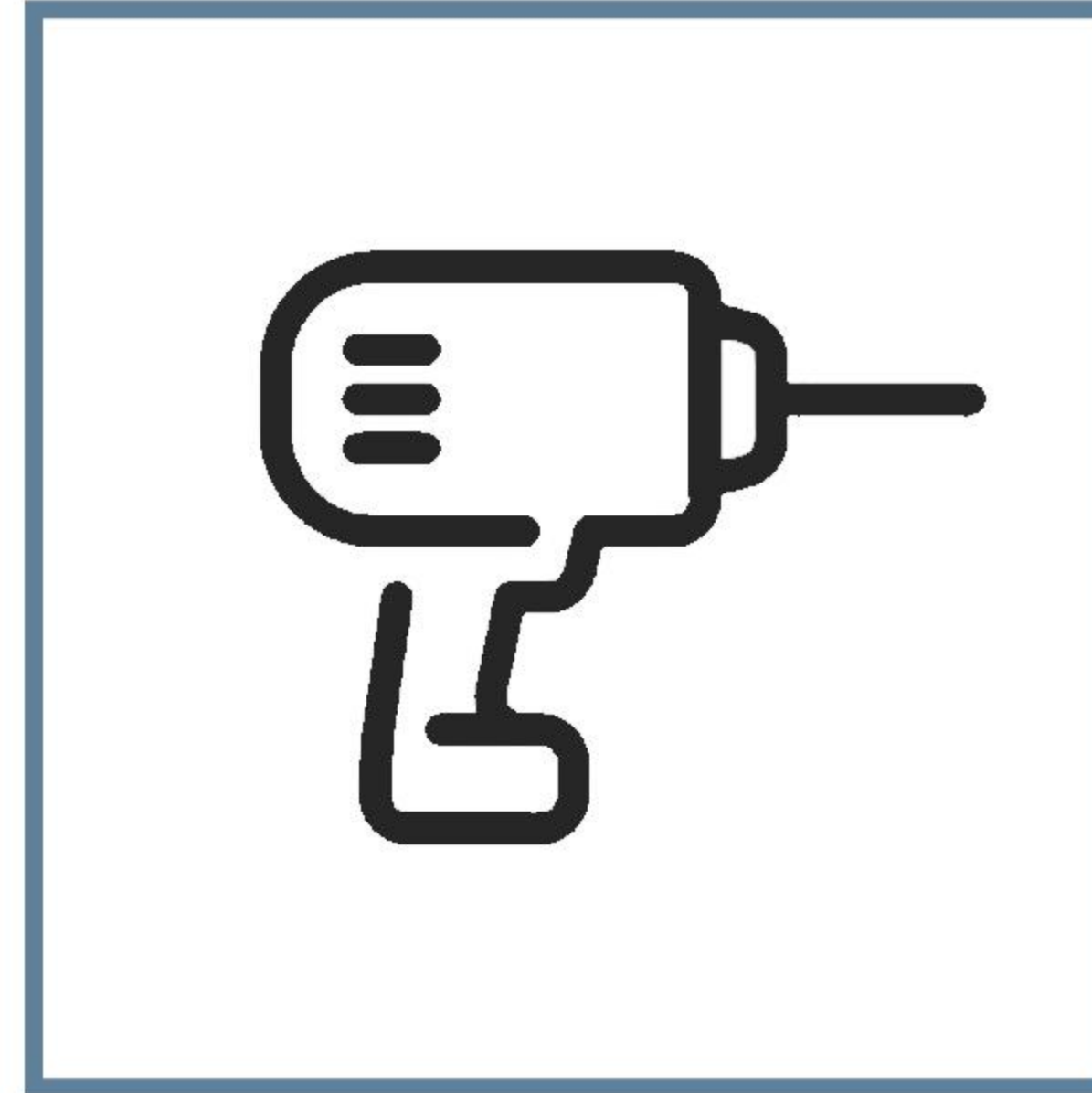


Foshan MexyTech Co., Ltd
www.mexytech.com

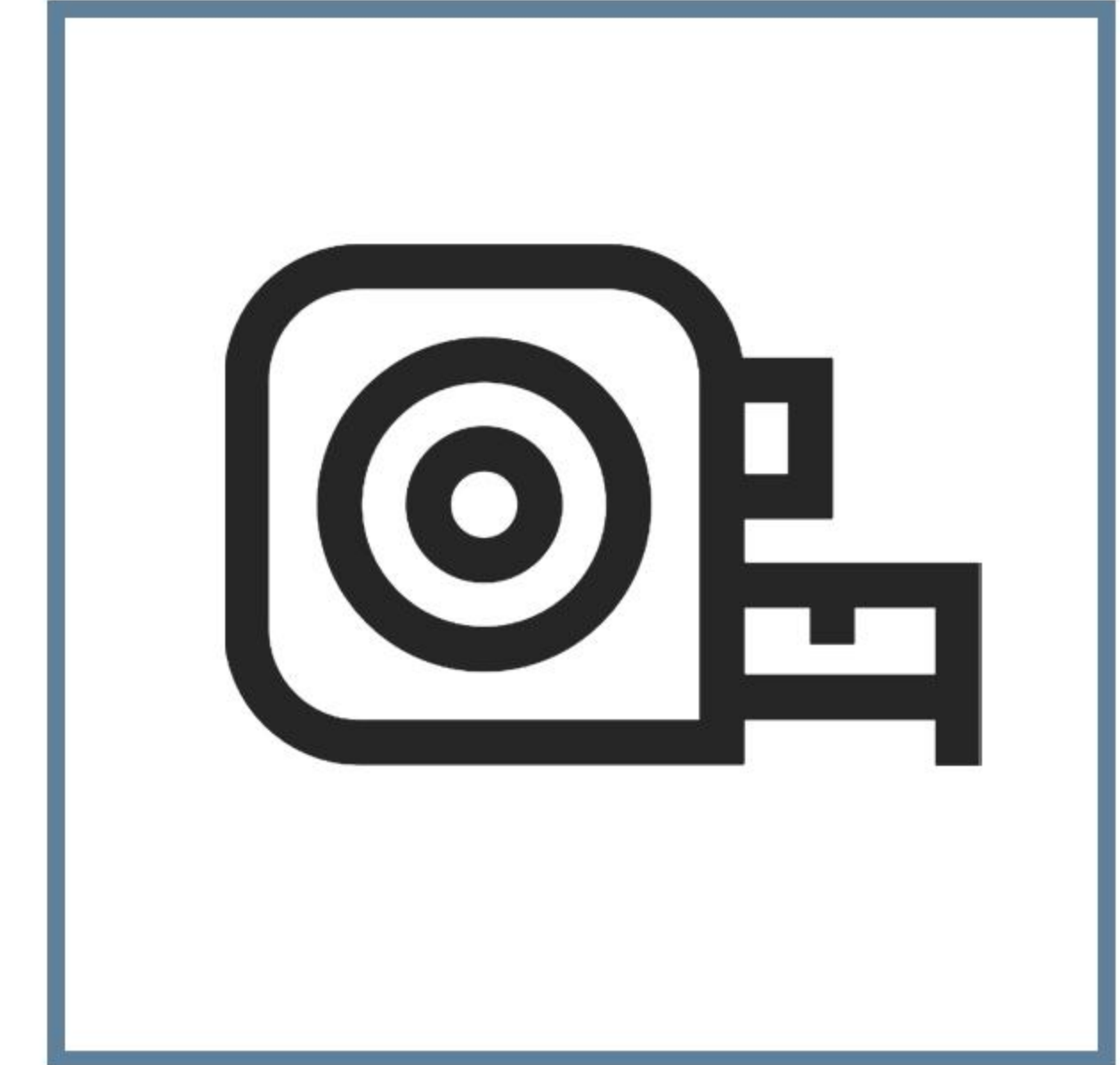
TOOL PREPARATION



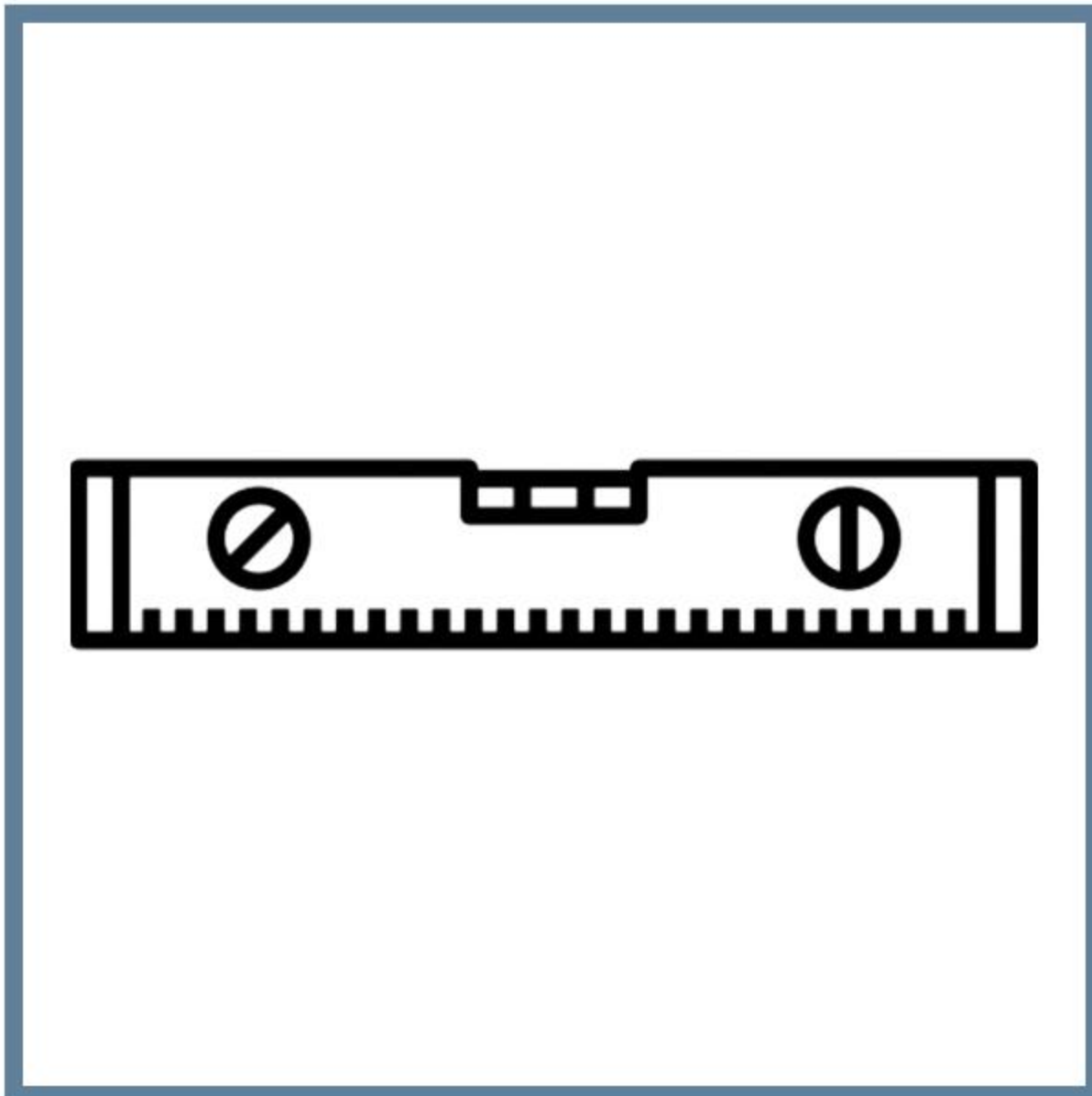
SAW



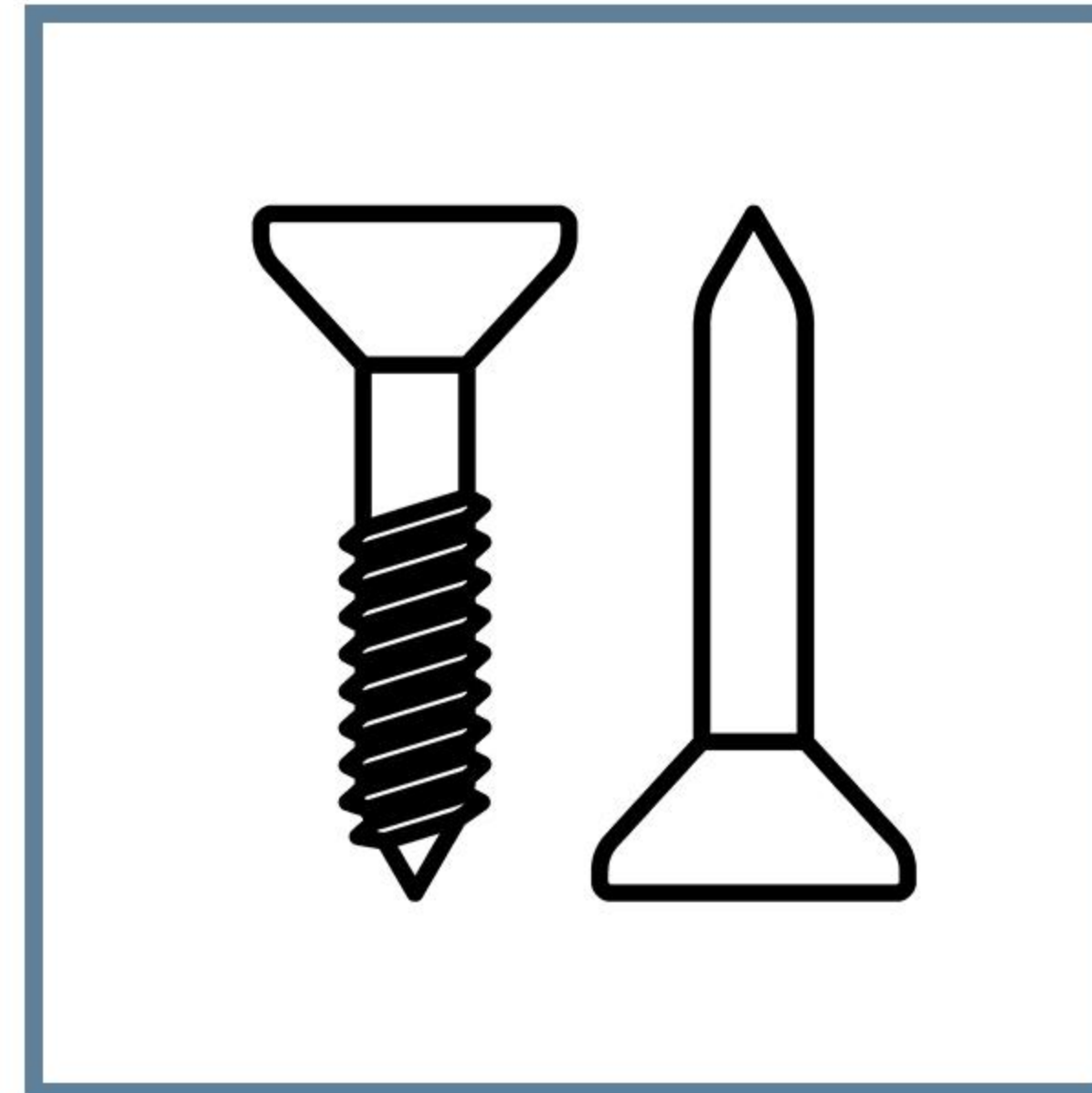
DRILL



TAPE MEASURE



SPIRIT LEVEL



SCREW

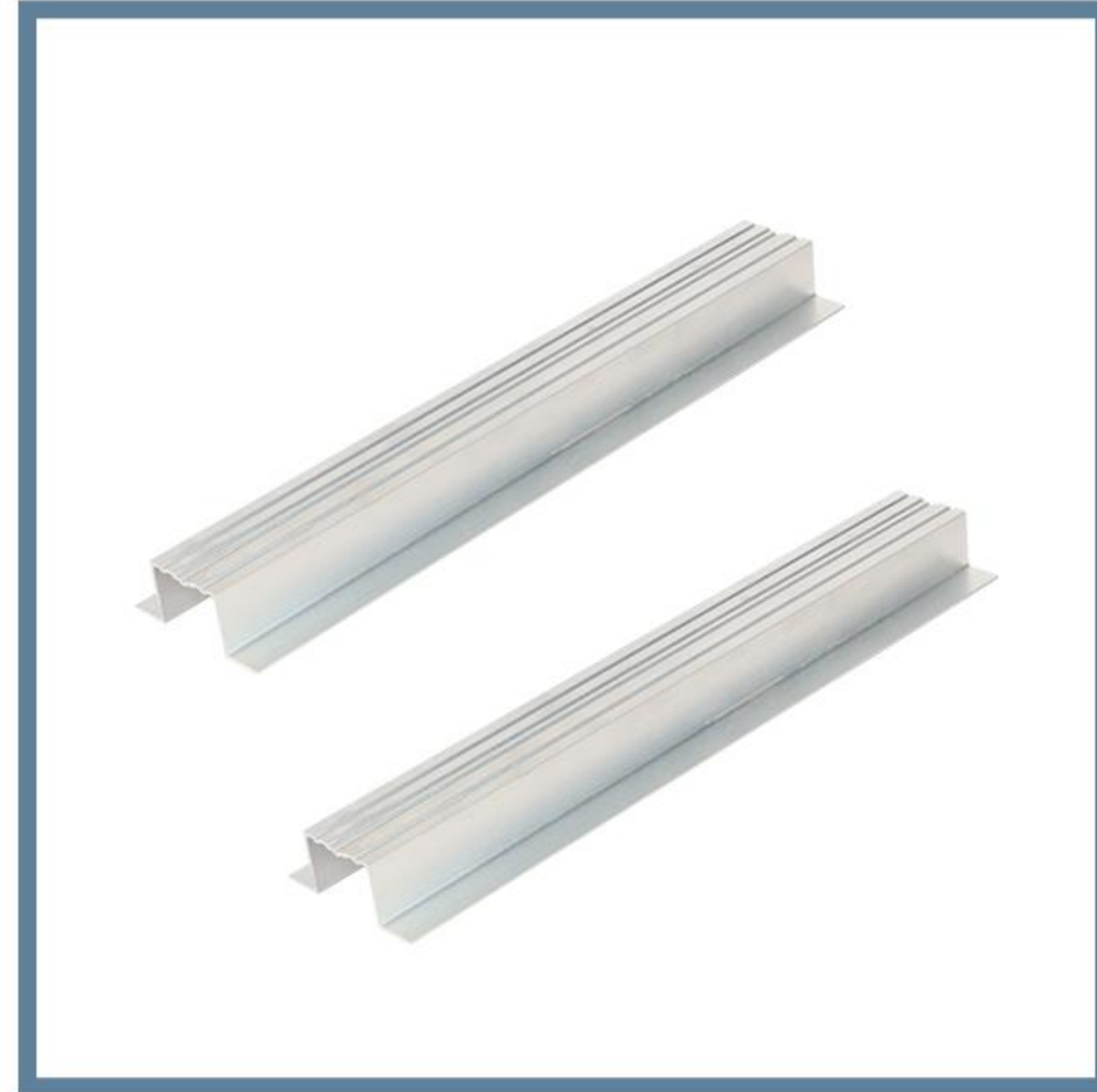


PROTECTION INSTRUMENT

INSTALLATION MATERIAL



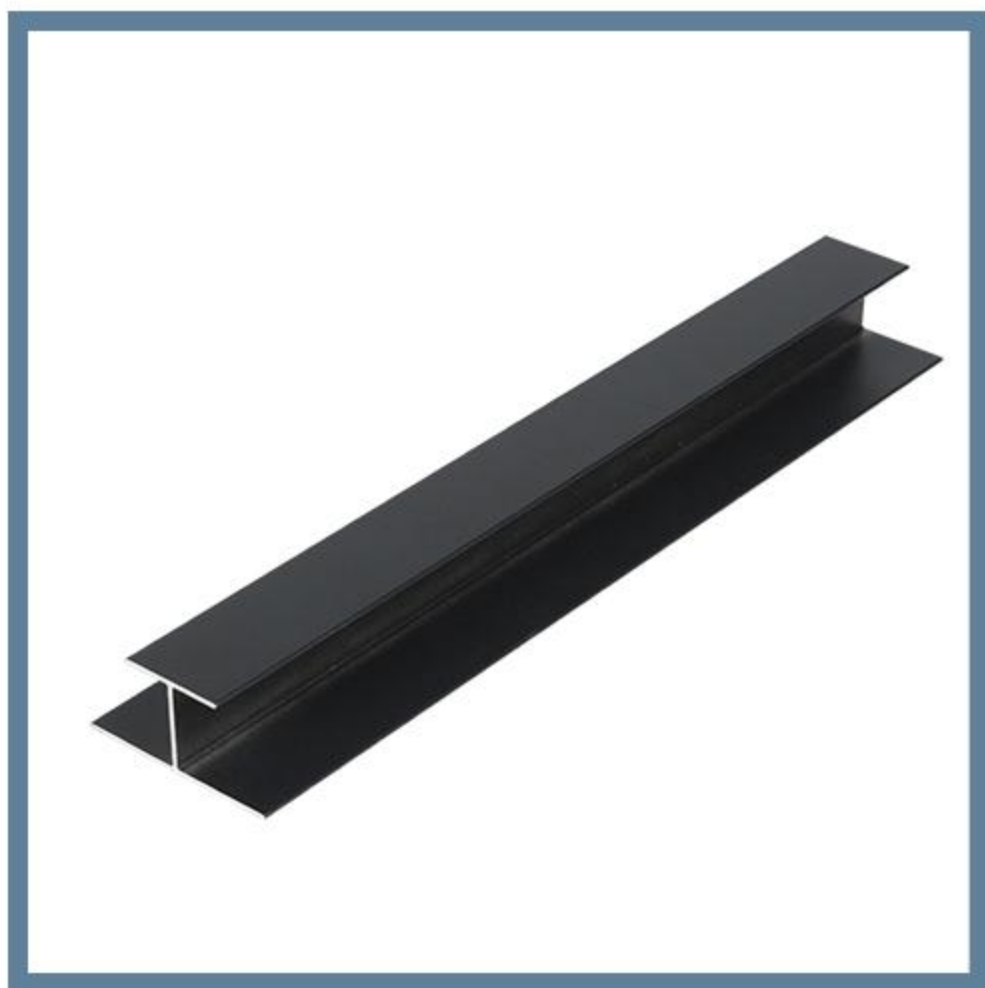
Cladding AC-WP18



Aluminum Joist AL02



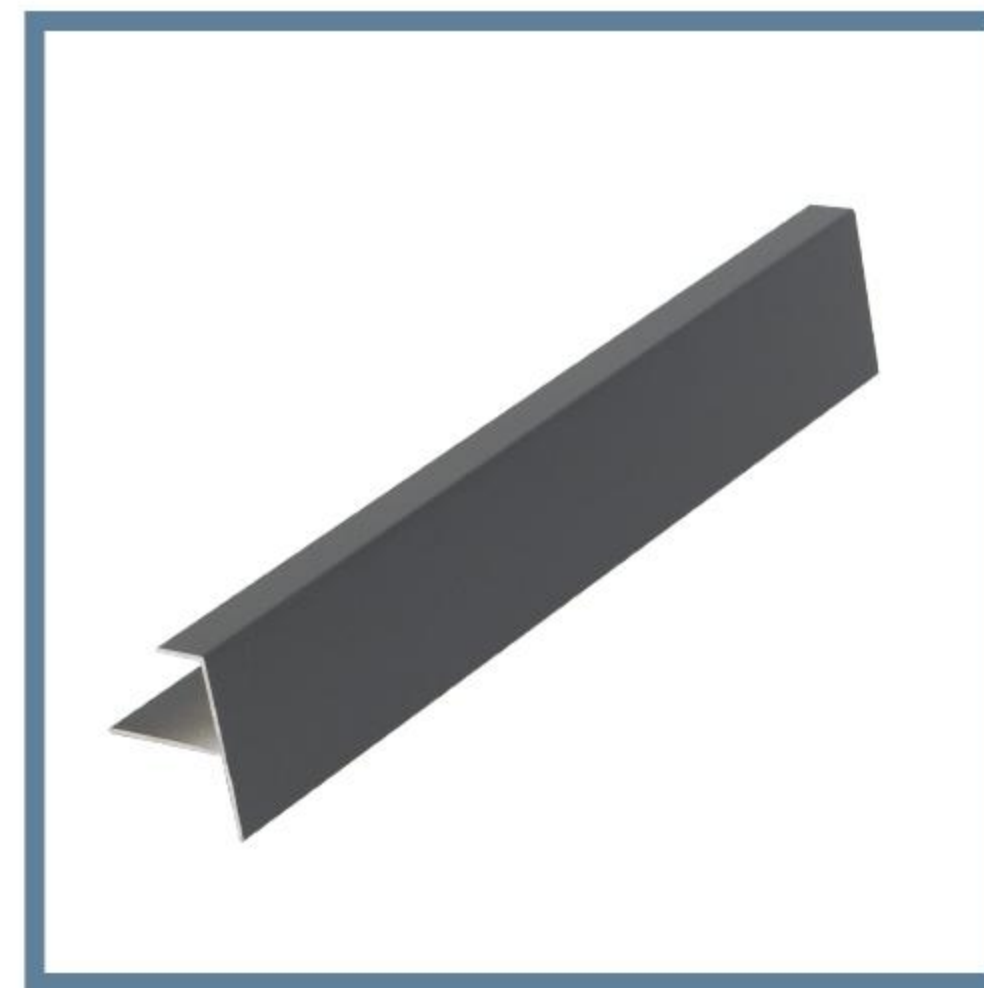
Joist Screw



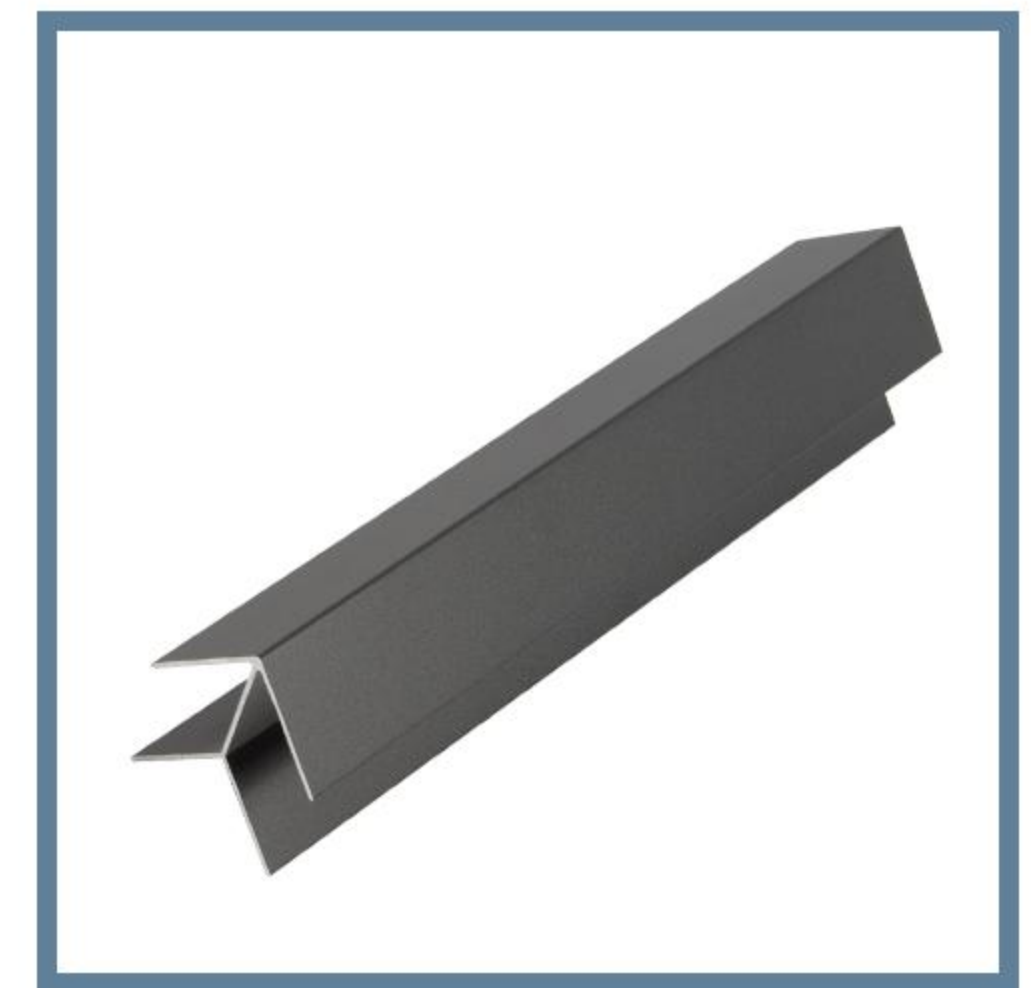
**Aluminum Corner
Trim AC02**



**Aluminum Siding
Trim AC04**

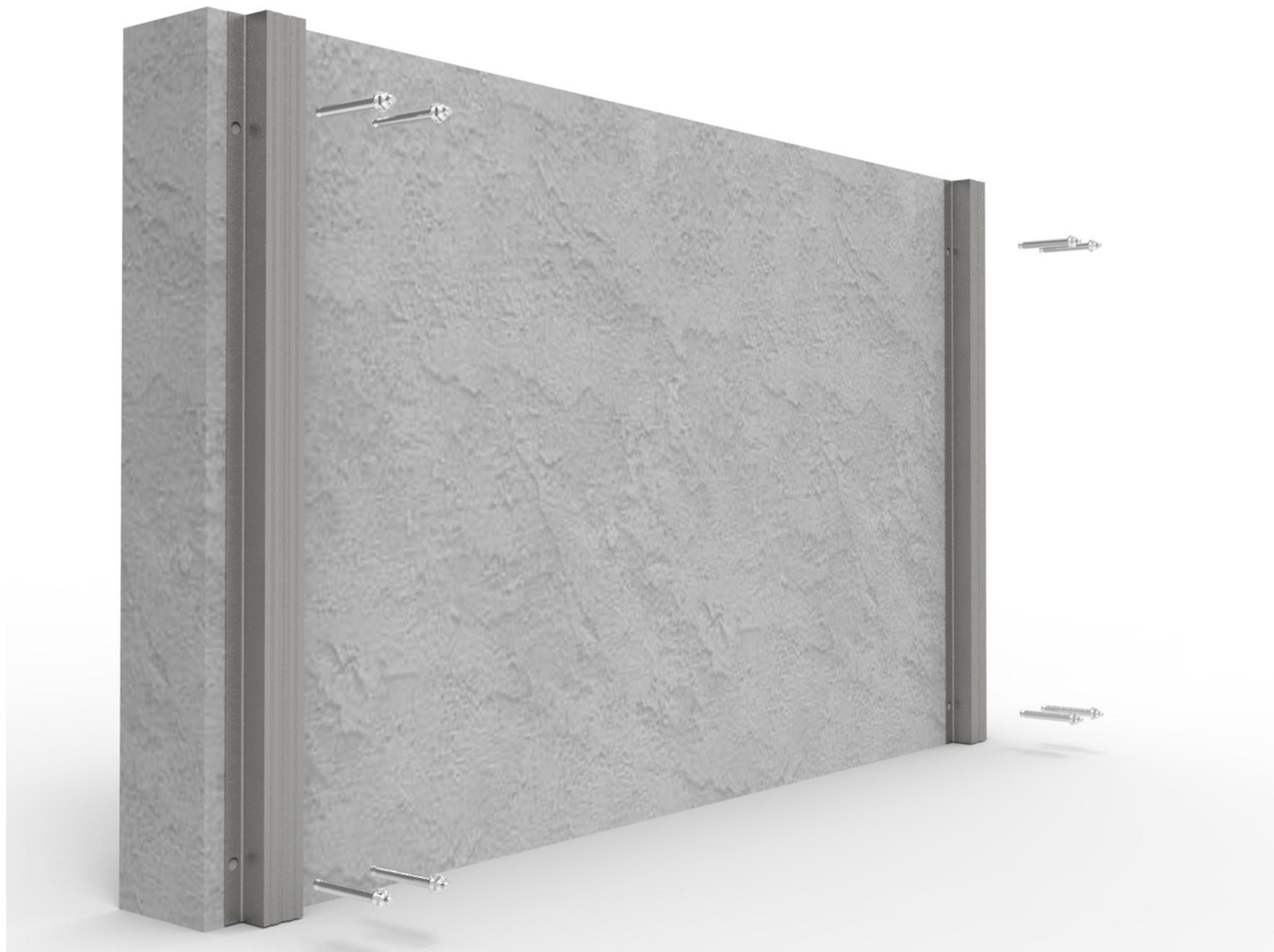


**Aluminum End
Trim AF01**



**Aluminum Corner
Trim AC01**

INSTALLATION STEPS



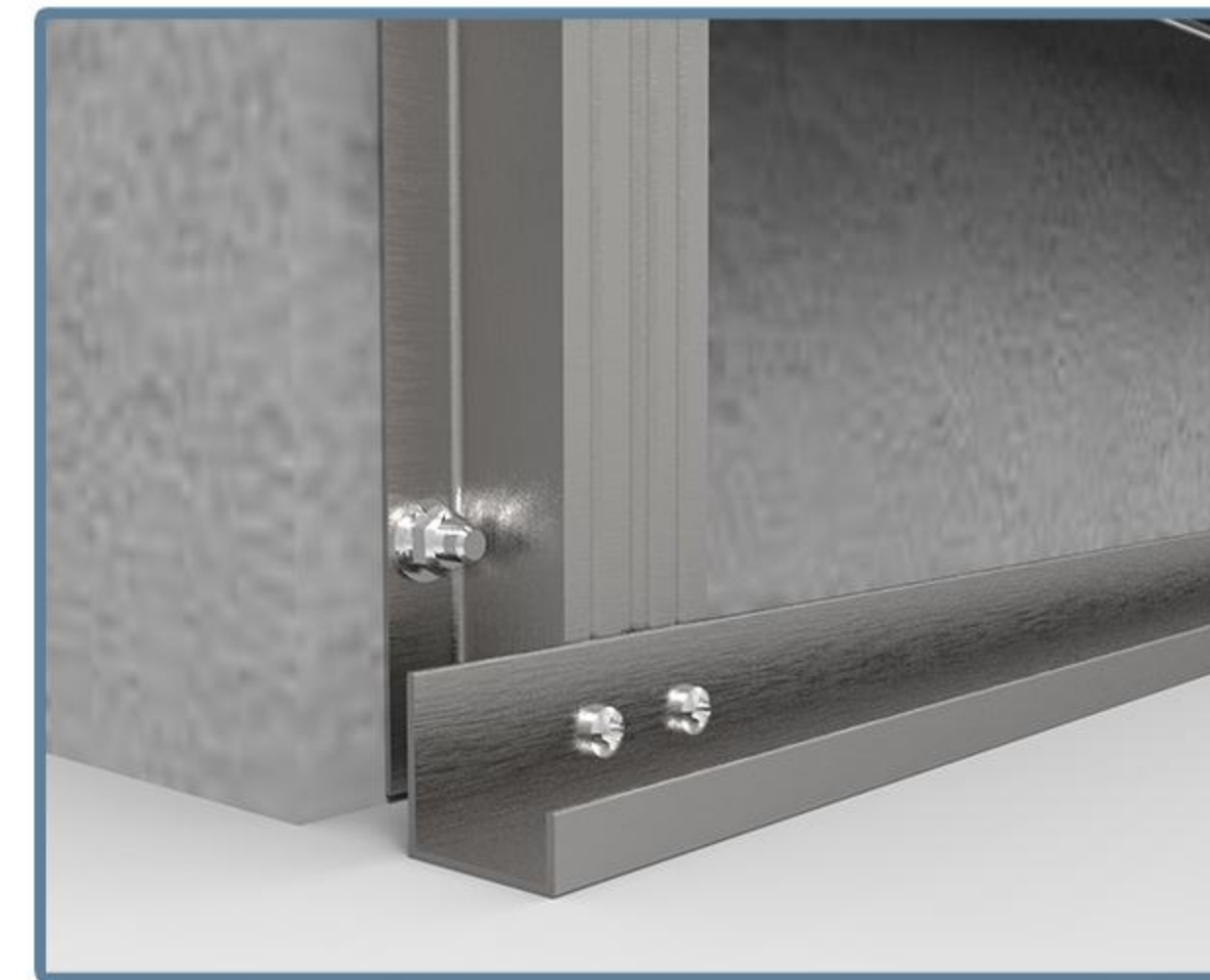
**Fix the aluminum joist on the wall
with expansion screw.
Joist span should be within 1 meters.**

INSTALLATION STEPS

**Drill the aluminum end siding
with screw to the joist at the bottom.**



After installation of joist and siding:



INSTALLATION STEPS

Put the first cladding panel against the siding, and drill along the edge of panel (Two screws



After installation of cladding:

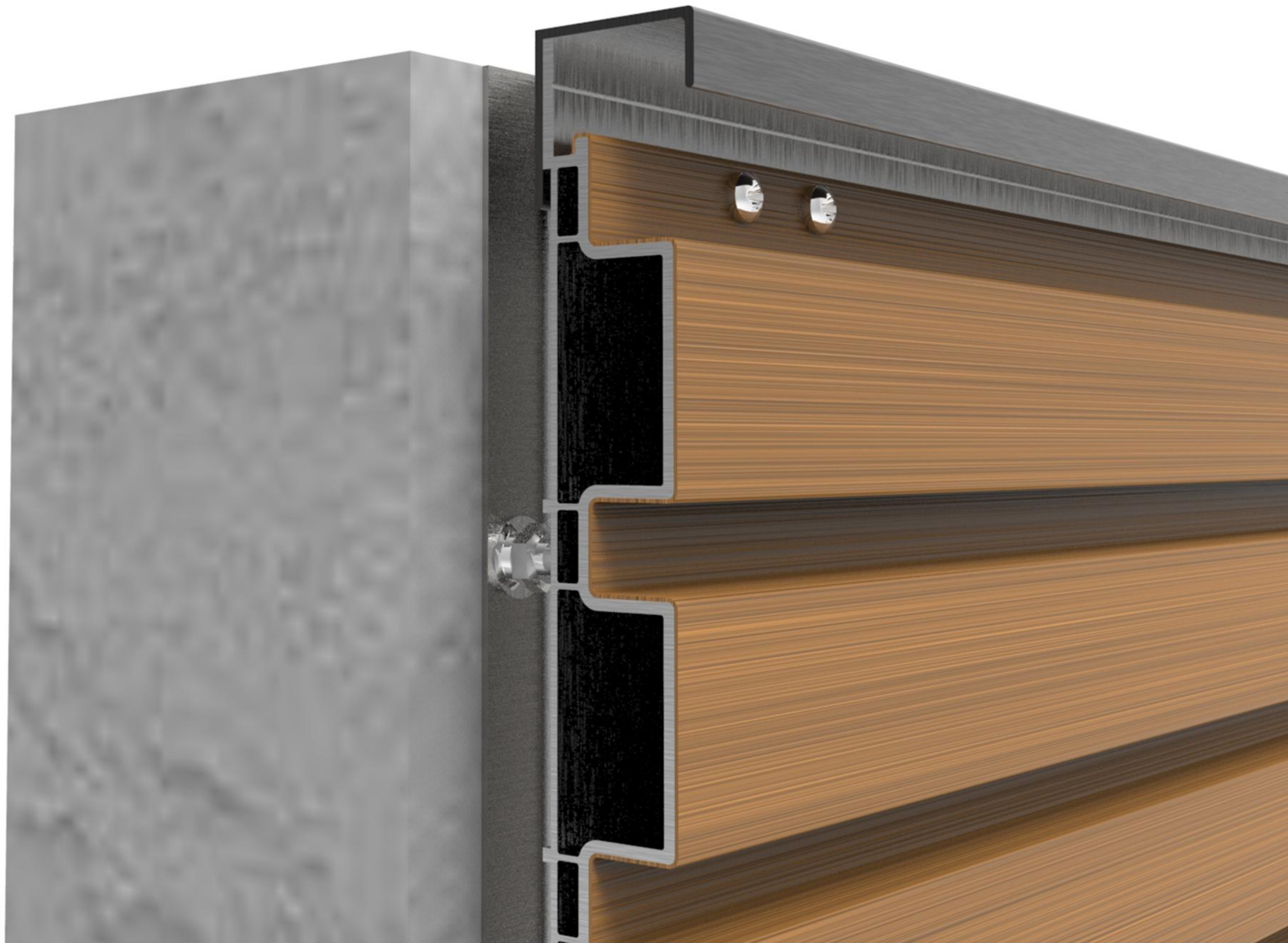


INSTALLATION STEPS



**Install the cladding panel one by one.
Use the cladding panel to cover
the edge of last panel to hide the drilling screw.**

INSTALLATION STEPS

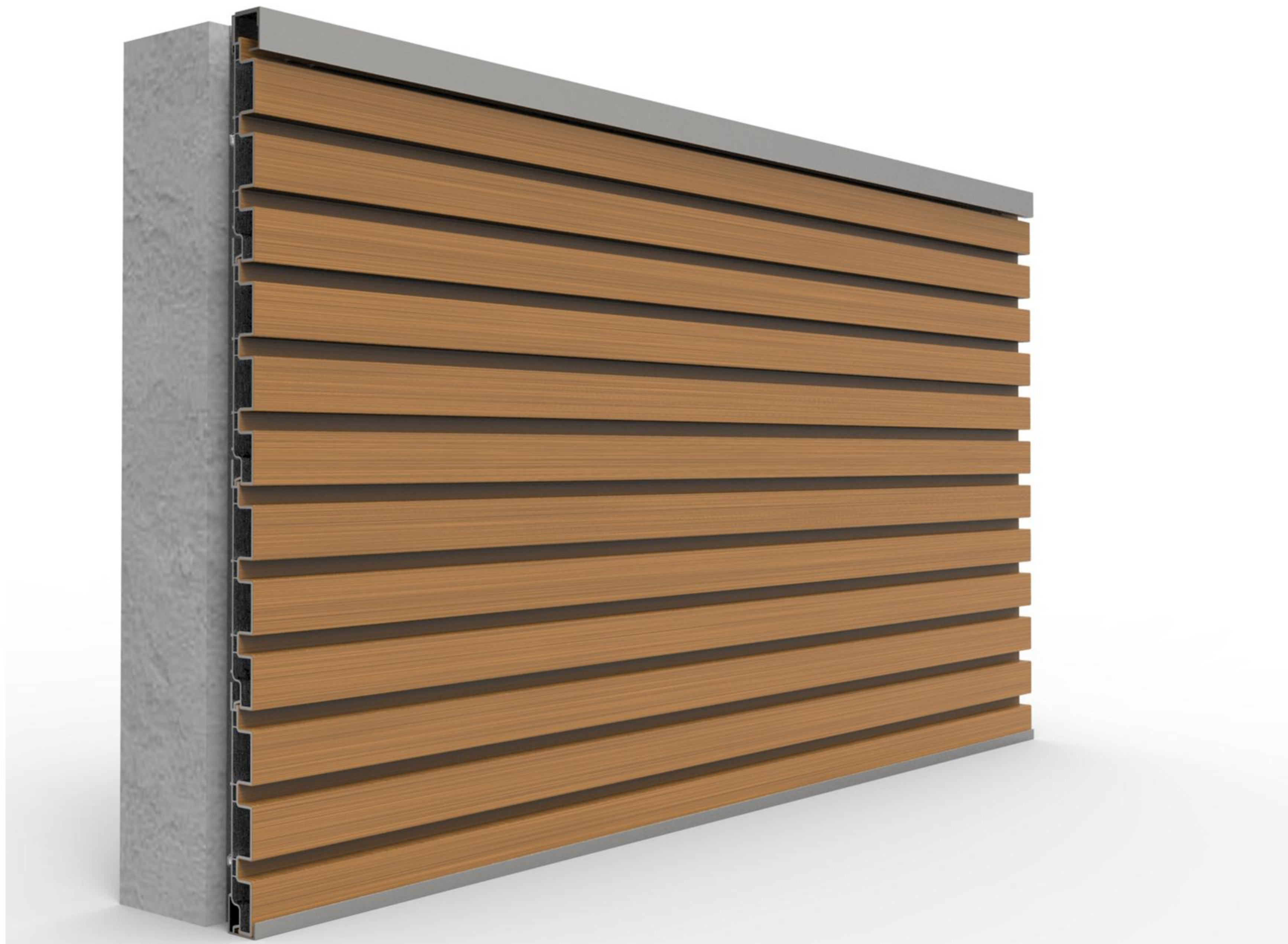


Put the first siding behind the edge of the cladding and fix with screw.

INSTALLATION STEPS



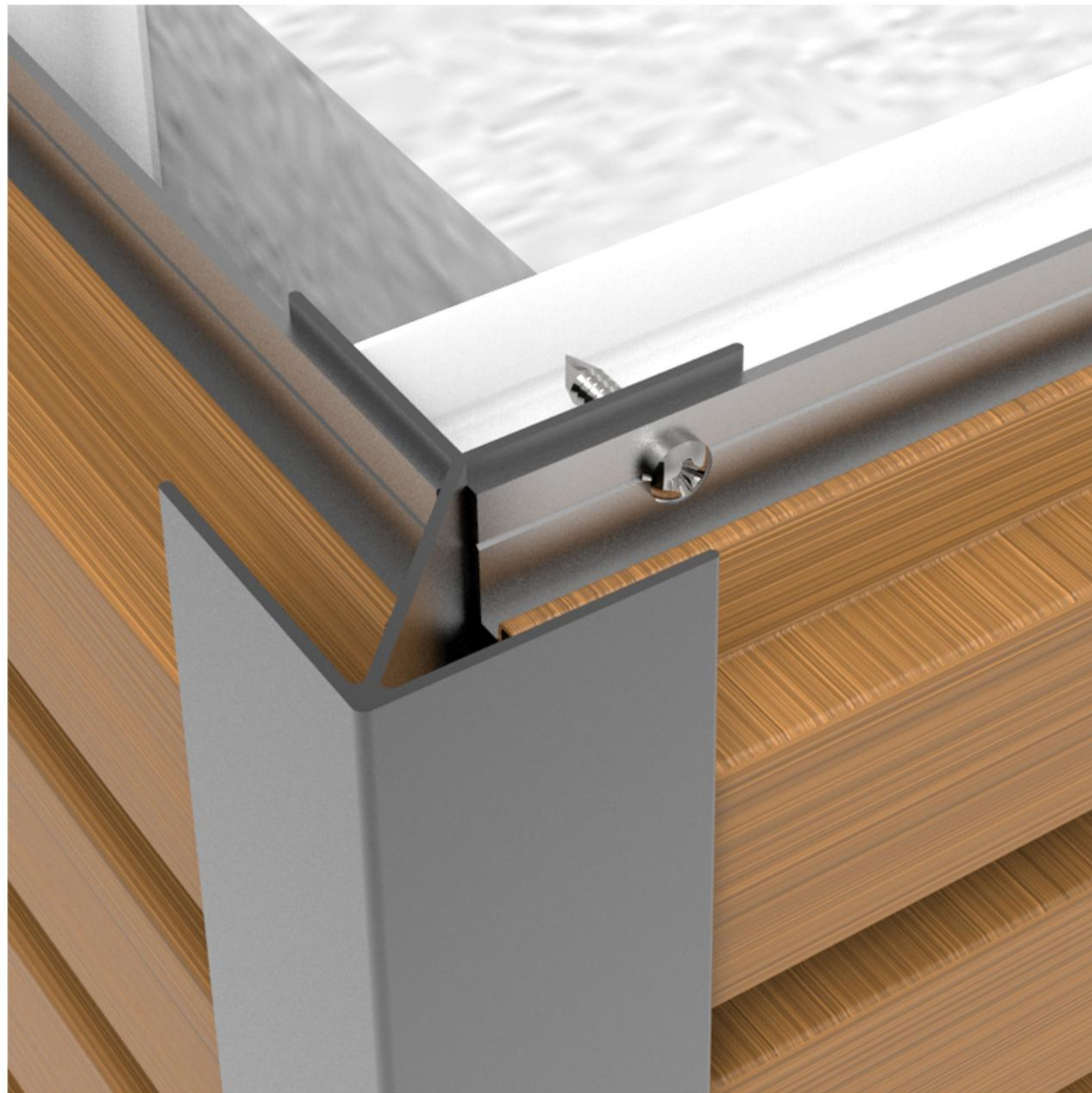
Put the second siding on the first and fix with screw on top.



Installation Overview.



Aluminum End Trim Application



Aluminum Corner Trim Application



Aluminum Transition Trim Application